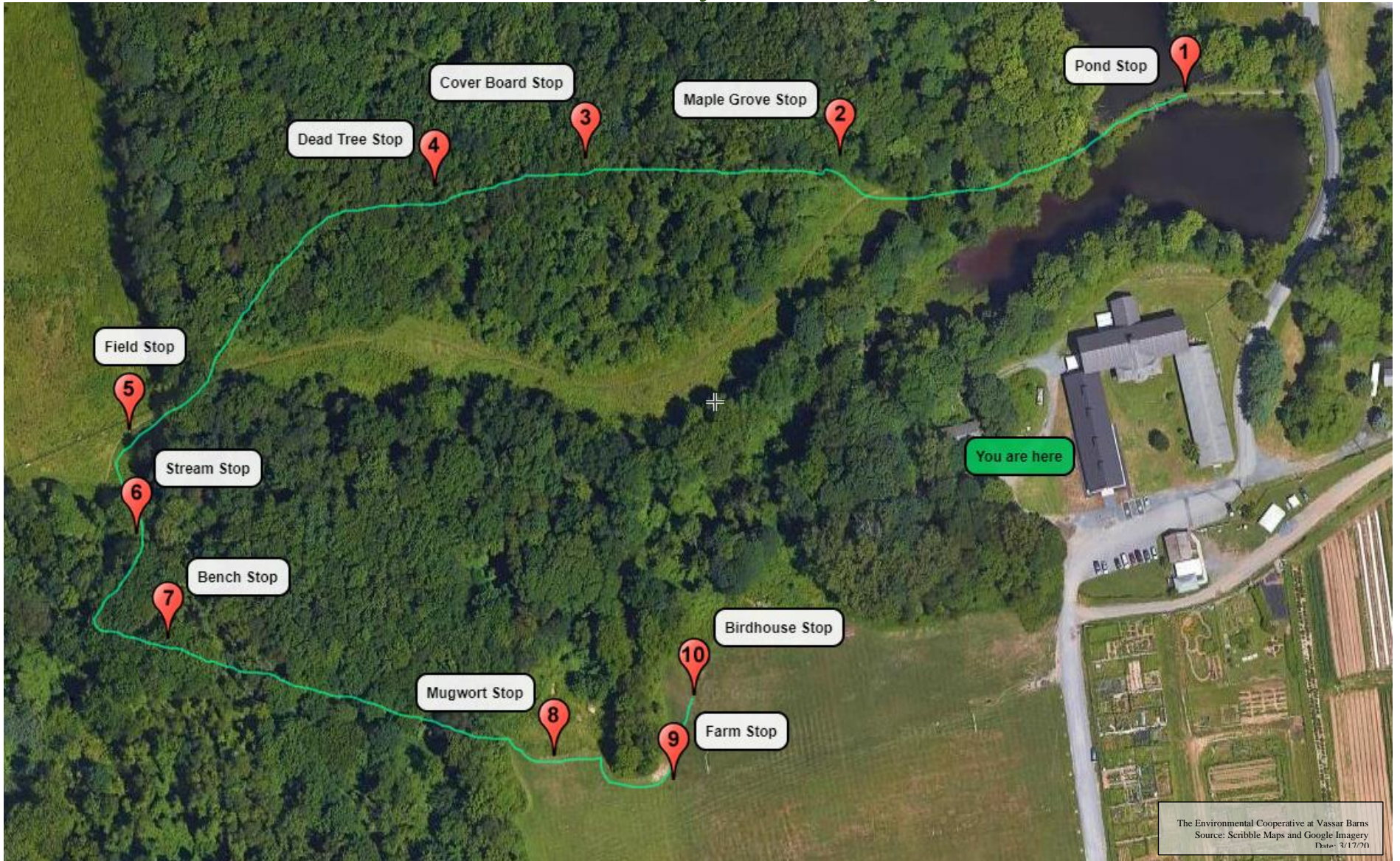


Multisensory Trail Map



Walking Directions

To start, follow the road down to the pond. Continue on the trail and do NOT take the first right that appears. Continue until you come to a fork in the trail. Take the right and you will see Stop 2. Do NOT continue onto the North Trail, instead take a left onto the Swain Trail. Stops 3 and 4 will be on this trail. When you get to a sign that says the North Trail, take a left and you will soon be at Stop 5, the field stop. Continue on the trail and you will soon be at Stop 6, the stream. From there, you will see Stop 7, the bench. Follow the rest of this trail out onto the rugby field for the last three stops. Continue straight after Stop 10 and you will be back in the parking lot by the barns.